



Department of Planning, Development and Transportation
 Planning Division
 305 Chestnut Street
 PO Box 1810
 Wilmington, NC 28402-1810

910 254-0900
 910 341-3264 fax
 www.wilmingtonnc.gov
 Dial 711 TTY/Voice

APPROVED: X DENIED: _____

PERMIT #: TPP-19-227

Application for Tree Removal Permit

Name of Applicant: Adam Grady Phone: (910) 343-8002 Date: 6/19/2019

Name of Property Owner: Cameron Properties Land Company, LLC Phone: (910) 762-2676

Property Owner Address: 1201 Glen Meade Rd; Wilmington, NC 28406

Email address for permit to be sent: agrady@hdsilm.com; bcameroniv@cameronco.com

Address of Proposed Tree Removal: 3743 Independence Blvd.; Wilmington, NC 28412

Description and location of tree(s) to be removed & reason for removal: **(provide attachment if necessary and tag tree(s) on site)**

1. See Plans attached
2. POINTE AT BARCLAY STREET / UTILITY EXTENSIONS
3. _____

Description of replacement trees: n/a

I, Adam Grady, certify that the property owner has given me permission to apply for this permit on his/her behalf.

Applicant Signature: [Signature] Date: 6/18/2019

*****FOR OFFICIAL USE ONLY*****

Reviewed by: [Signature] Date: 11/6/19

Remarks: NO SIGNIFICANT TREE REMOVAL

Trees removed for ESSENTIAL site improvement only

ALL WORK MUST BE IN COMPLIANCE WITH THE CITY LAND DEVELOPMENT CODE, ARTICLE 8, LANDSCAPING AND TREE PRESERVATION

NEW CONSTRUCTION: _____ EXPANSION: _____ OTHER: _____ PAID: \$50.00 NO 6/20/19

Tree preservation permit fees

Less than 1 acre	\$25.00
1-5 acres	\$50.00
5-10 acres	\$100.00
Greater than 10 acres	\$150.00

IF MITIGATION IS REQUIRED, CONTACT THE ZONING DEPARTMENT AT (910)254-0900 TO DISCUSS A PLANTING SCHEDULE

Application can be mailed, emailed to: zoning@wilmingtonnc.gov or dropped off at our office.

Approved Construction Plan
 Name _____ Date _____
 Planning _____
 Traffic _____
 Fire _____

For each open utility cut of City streets, a \$325 permit shall be required from the City prior to occupancy and/or project acceptance.

STORMWATER MANAGEMENT PLAN
APPROVED
CITY OF WILMINGTON
ENGINEERING DEPARTMENT
 DATE _____
 PERMIT # _____
 SIGNED _____

TREE TABLE							
No.	DESCRIPTION	No.	DESCRIPTION	No.	DESCRIPTION	No.	DESCRIPTION
3	12" pine	23	15.5" pine	46	14.5" pine	67	13" pine
4	12" pine	24	16.5" pine	47	13" pine	68	12.5" pine
5	13.5" pine	25	15" pine	48	13.5" pine	69	13" pine
6	13.5" pine	26	13" pine	49	9.5" hardwood	70	12" pine
7	13.5" pine	27	15.5" pine	50	17" pine	71	12" pine
8	14" pine	29	15" pine	51	14" pine	72	12" pine
9	12" pine	30	12.5" pine	52	12.5" pine	73	13.5" pine
10	12" pine	31	14" pine	53	13.5" pine	74	13" pine
11	13.5" pine	32	21" pine	54	13" pine	75	12" pine
12	12.5" pine	33	15" pine	55	twin 9" hardwood	76	14" pine
13	12" pine	34	14.5" pine	56	15.5" pine	77	12.5" pine
14	13" pine	35	14.5" pine	57	12" pine	78	14" pine
15	15.5" pine	36	13.5" pine	58	14.5" pine	79	12.5" pine
16	12.5" pine	37	13" pine	59	12" pine	80	12" pine
17	17" pine	38	13" pine	60	13.5" pine	81	13" pine
18	12" pine	39	13" pine	61	14.5" pine	82	15.5" pine
19	15" pine	40	17.5" pine	62	12.5" pine	83	twin 11" 14" pine
20	13" pine	41	12" pine	63	13.5" pine	84	15" pine
21	14.5" pine	43	12.5" pine	65	15" pine	86	12.5" pine
22	12" pine	44	12.5" pine	66	15.5" pine	87	14.5" pine
						88	13" pine
						89	14" pine
						90	12" pine
						91	twin 13.5" hardwood
						92	13" pine
						93	12" pine
						94	13" pine
						95	14" pine
						96	13" pine
						97	13" pine
						98	12.5" pine
						99	13" pine
						100	14.5" pine
						101	4" pine
						102	twin 12" 15" pine
						103	12.5" pine
						104	12.5" pine
						105	13.5" pine
						106	13.5" pine
						107	15.5" pine
						108	12" pine
						109	12" pine
						110	12" pine
						111	12" pine
						112	12" pine
						113	13" pine
						114	12.5" pine
						115	6.5" mag
						116	15" pine
						117	3.5" holly
						118	16" pine
						119	12" pine
						120	13" pine
						121	12.5" pine
						122	13" pine
						123	19.5" pine
						124	13.5" pine
						125	15" pine
						126	13" pine
						127	15" pine
						128	13" pine
						129	14.5" pine
						130	13" pine
						131	14.5" pine
						132	14" pine
						133	13" pine
						134	15" pine
						135	14.5" pine
						136	14.5" pine
						137	11.5" hardwood
						138	14.5" pine
						139	12" pine
						140	12" pine
						141	14" pine
						142	13.5" pine
						143	14" pine
						144	14" pine
						145	12.5" pine
						146	12" pine
						147	12" pine
						148	12" pine
						149	13" pine
						150	13" pine
						151	14" pine
						152	14.5" pine
						153	12" pine
						154	13.5" pine
						155	15.5" pine
						156	13.5" pine
						157	14" pine
						158	13.5" pine
						159	twin 8.5" hardwood

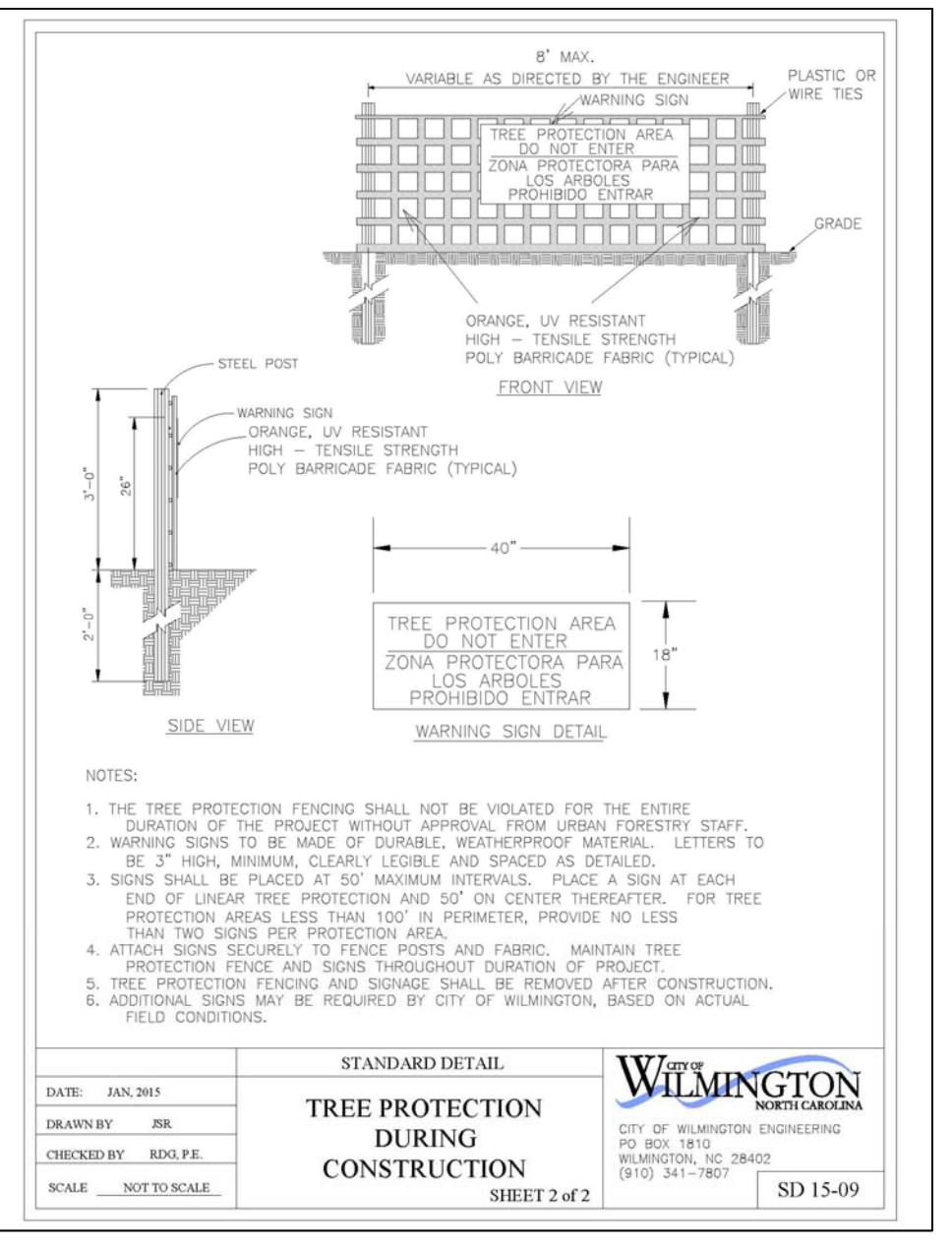
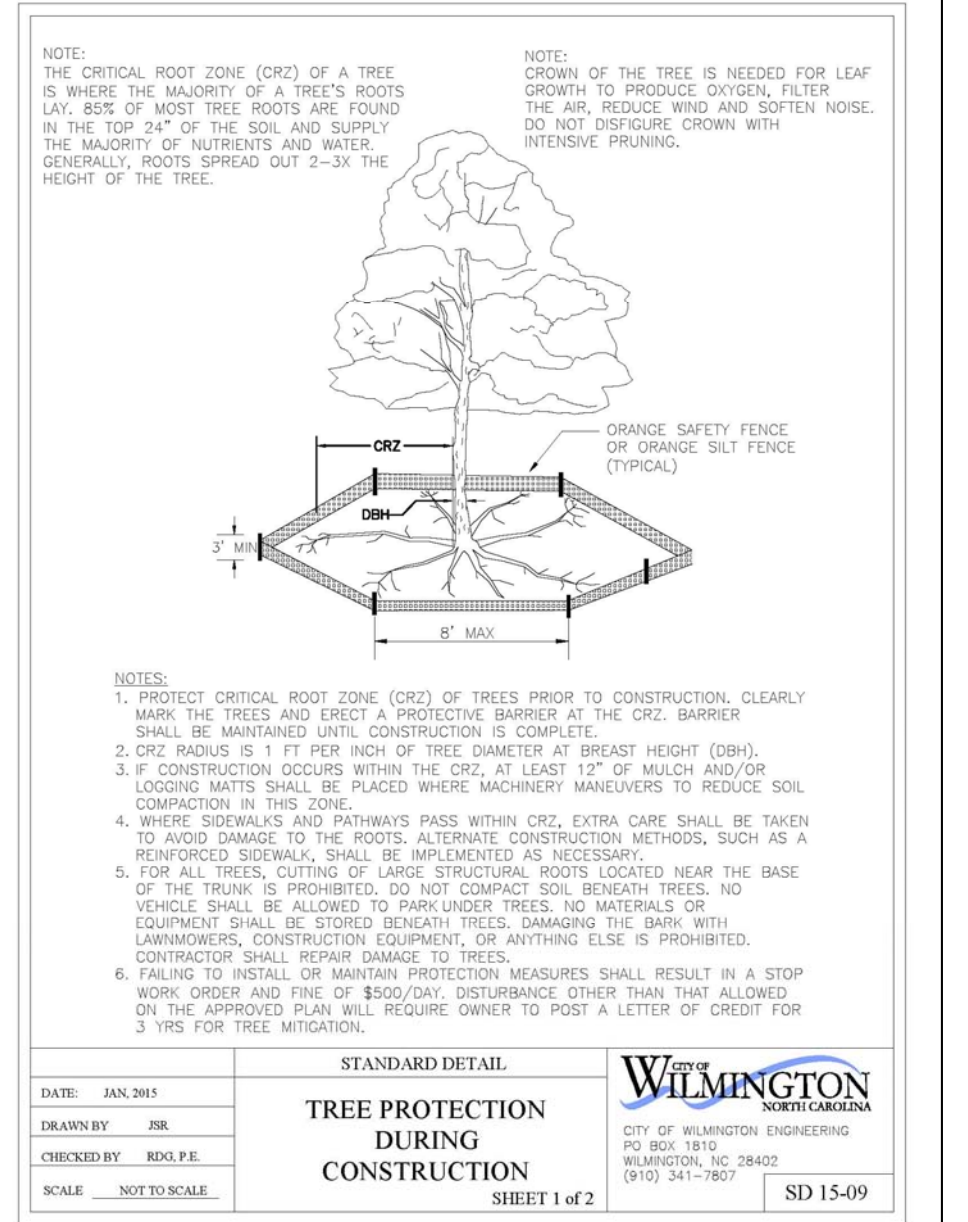
REGULATED TREES TO BE REMOVED

PINES -35
 3.5" HOLLY - 1
TOTAL - 36

X REGULATED TREE TO BE REMOVED

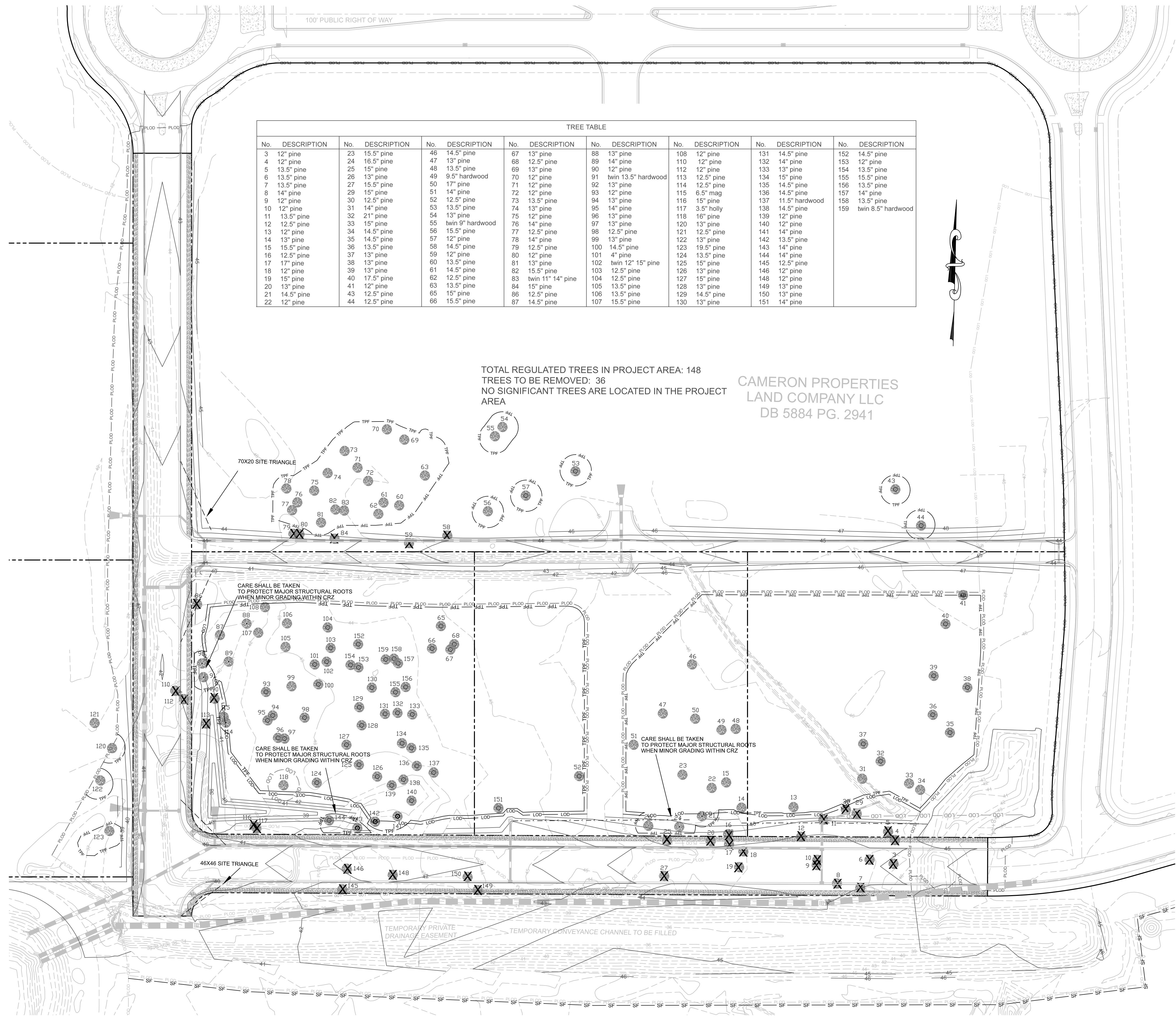
— LOD — LOD — LIMITS OF DISTURBANCE
 — TPF — TPF — TREE PROTECTION FENCING
 — PLOD — PLOD — PREVIOUSLY PERMITTED LIMITS OF DISTURBANCE
 — SF — SF — PROPOSED SITE FENCE

- NOTES:**
- NO SIGNIFICANT TREES ARE LOCATED WITHIN PROJECT AREA.
 - ALL REGULATED TREES LOCATED ON SITE ARE SHOWN.
 - REGULATED TREES TO BE REMOVED ARE NECESSARY FOR SITE IMPROVEMENTS AND GRADING AS SHOWN.
 - TREE REMOVAL PERMIT IS REQUIRED PRIOR TO CONSTRUCTION.
 - TREE PROTECTION FENCING TO BE INSTALLED AS SHOWN PRIOR TO CONSTRUCTION.



TOTAL REGULATED TREES IN PROJECT AREA: 148
TREES TO BE REMOVED: 36
NO SIGNIFICANT TREES ARE LOCATED IN THE PROJECT AREA

CAMERON PROPERTIES LAND COMPANY LLC
DB 5884 PG. 2941



REV. NO.	REVISIONS	DATE
1	UPDATE LIMITS OF DISTURBANCE	7/16/2019
1	UPDATE TREE SURVEY (POST STORM CONDITIONS)	04/28/2019

Copyright © Hanover Design Services, P.A. All rights reserved. Reproduction or use of the contents of this document, or additions or deletions to this document, in whole or in part, without written consent of the Land Surveyor or Engineer, is prohibited. Only copies from the original of this document, marked with the original signature and original seal of the Surveyor or Engineer, shall be considered to be valid and true copies.

TREE REMOVAL PLAN
THE POINTE AT BARCLAY STREET AND UTILITY EXTENSIONS
 LOCATED IN THE CITY OF WILMINGTON
 NEW HANOVER COUNTY, NORTH CAROLINA

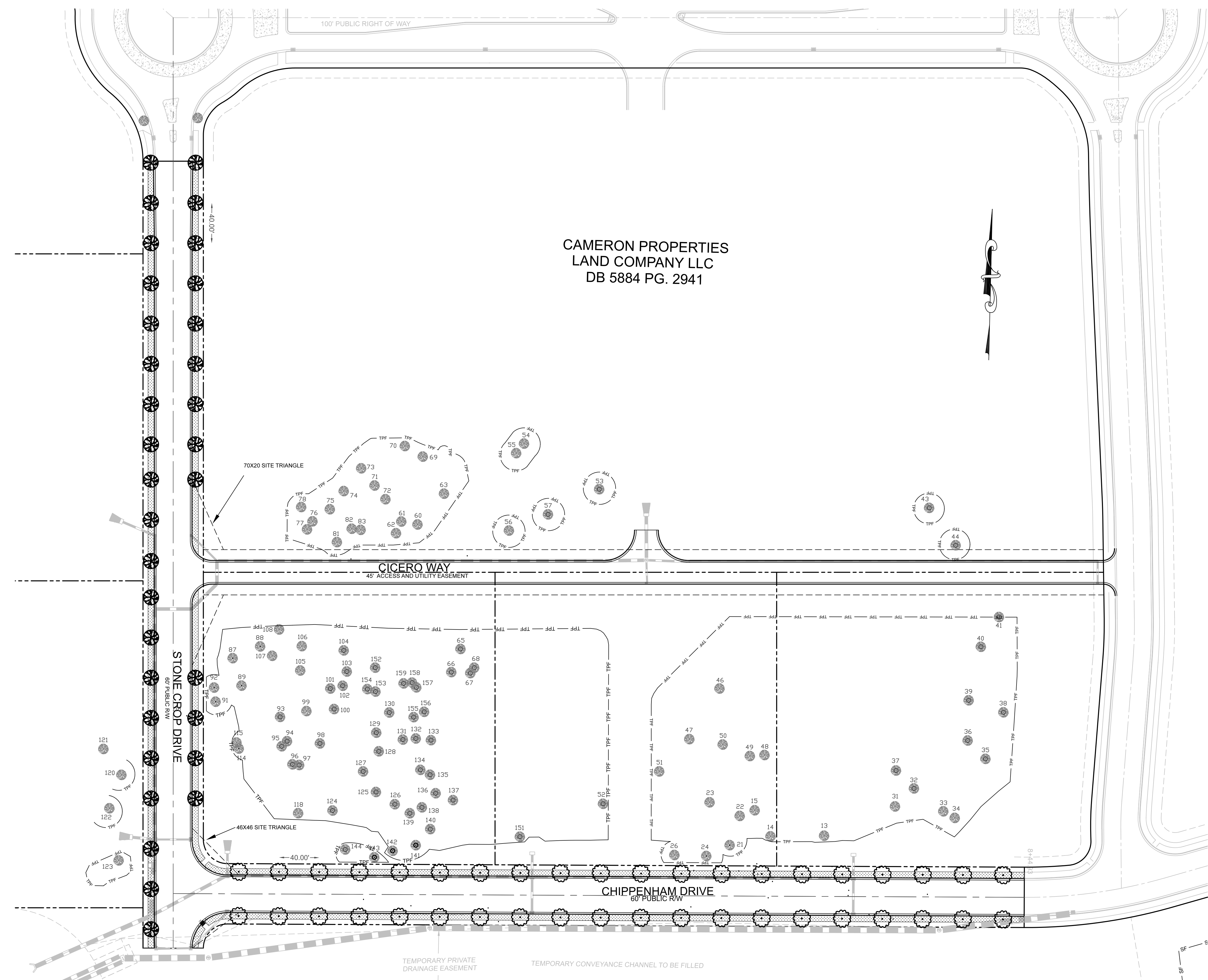
Date: 4-26-19
 Scale: 1"=50'
 Drawn: GW
 Checked: AG
 Project No: 12498

OWNER:
CAMERON PROPERTIES LAND COMPANY, LLC
 1201 GLEN MEADE ROAD PO BOX 3649
 WILMINGTON, NC 28406
 910-762-2676

HANOVER DESIGN SERVICES, P.A.
 LAND SURVEYORS, ENGINEERS & LAND PLANNERS
 1123 FLORAL PARKWAY
 WILMINGTON, N.C. 28403
 PHONE: (910) 343-8022
 License # C-5597

Sheet No: **TS-1**
TS-1

FINAL DESIGN NOT RELEASED FOR CONSTRUCTION

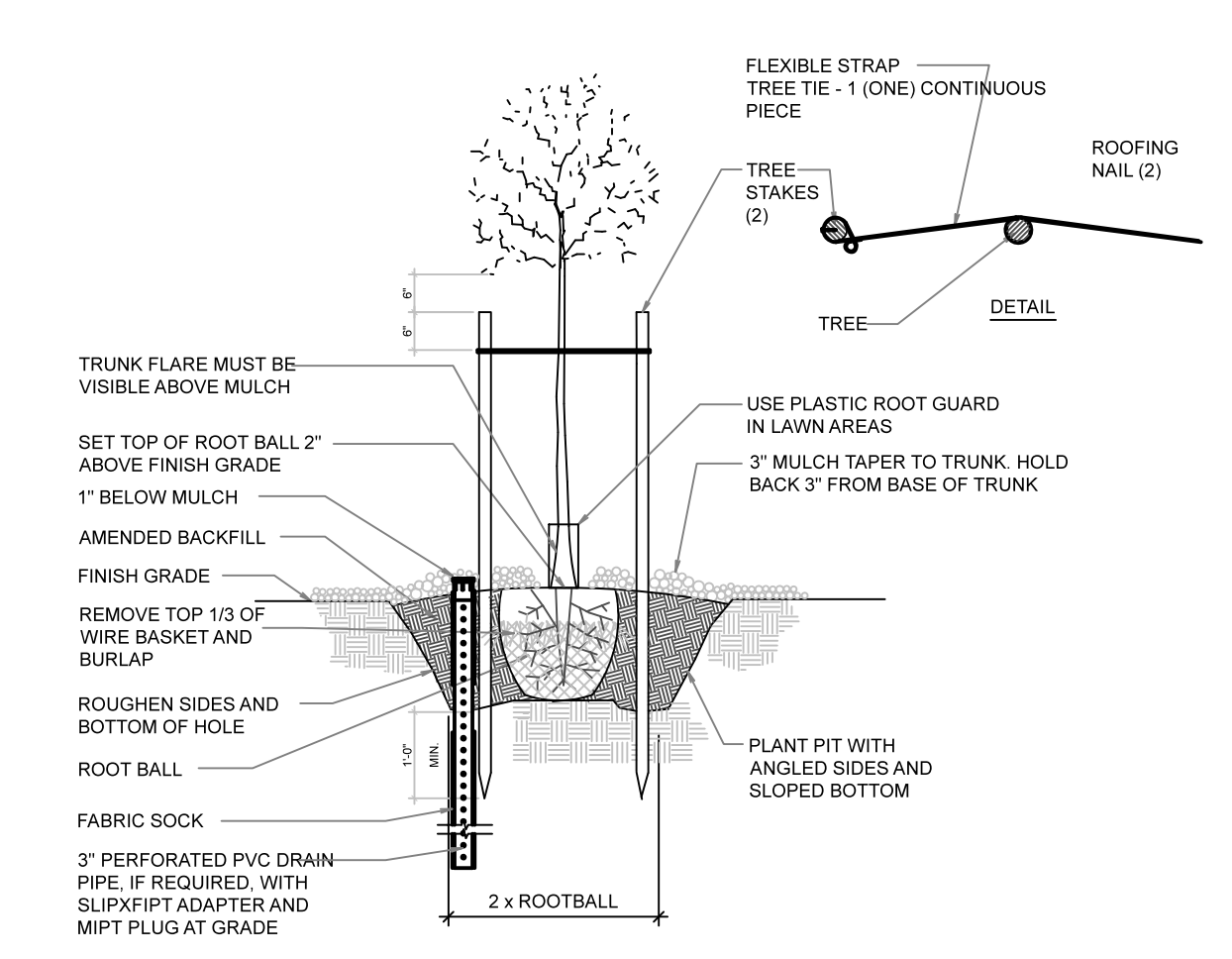


CAMERON PROPERTIES
LAND COMPANY LLC
DB 5884 PG. 2941

Approved Construction Plan
Name _____ Date _____
Planning _____
Traffic _____
Fire _____

For each open utility cut of City streets, a \$325 permit shall be required from the City prior to occupancy and/or project acceptance.

STORMWATER MANAGEMENT PLAN
APPROVED
CITY OF WILMINGTON
ENGINEERING DEPARTMENT
DATE _____
PERMIT # _____
SIGNED _____



TREE PLANTING AND STAKING
NOT TO SCALE

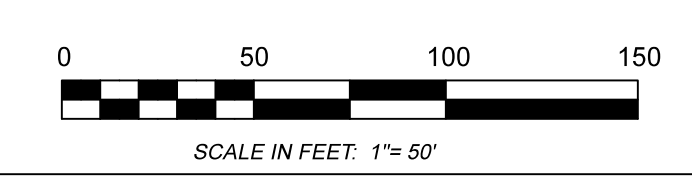
PLANT SCHEDULE

- Quercus Nuttallii/Nuttall Oak: 40 2-3" Caliper
- Ulmus Parvifolia/Lacebark Elm Tree: 34 2.5-3" Caliper
- Bermuda Grass: Approximately 13,543 SF
- Existing trees to be preserved

ACTUAL QUANTITIES SHALL BE CONFIRMED BY THE LANDSCAPER PRIOR TO INSTALLATION

LANDSCAPING NOTES

1. No plantings over thirty inches in height allowed in vision clearance.
2. Protection from vehicular traffic provided around all landscaping with a minimum height of six (6) inches.
3. Owner is responsible for maintenance to ensure plant material lives and prospers.
4. Planting plans shall be approved by landscape designer prior to installation.
5. Proposed vegetation shall not obstruct the area within the sight triangles in the range of 2.5' to 10.0' above ground level.
6. All quantities are approximate. Landscaper to confirm quantities prior to planting.



REV. NO.	REVISIONS	DATE
2	UPDATE TREE SPACING	09/12/2019
1	UPDATE TREE SURVEY (POST STORM CONDITIONS)	04/26/2019

STREET TREE PLAN
THE POINTE AT BARCLAY STREET AND UTILITY EXTENSIONS
LOCATED IN THE CITY OF WILMINGTON NEW HANOVER COUNTY, NORTH CAROLINA

Date: 9-04-18
Scale: 1"=50'
Drawn: AHG
Checked: AHG
Project No: 12498
Sheet No: L-1 of L-1

OWNER:
CAMERON PROPERTIES LAND COMPANY, LLC
1201 GLEN MEADE ROAD PO BOX 3849
WILMINGTON, NC 28406
910-762-2676

HANOVER DESIGN SERVICES, P.A.
LAND SURVEYORS, ENGINEERS & LAND PLANNERS
1123 FLORAL PARKWAY
WILMINGTON, N.C. 28403
PHONE: (910) 348-8002
License # C-6587

agrady@hdsllm.com

FINAL DESIGN NOT RELEASED FOR CONSTRUCTION